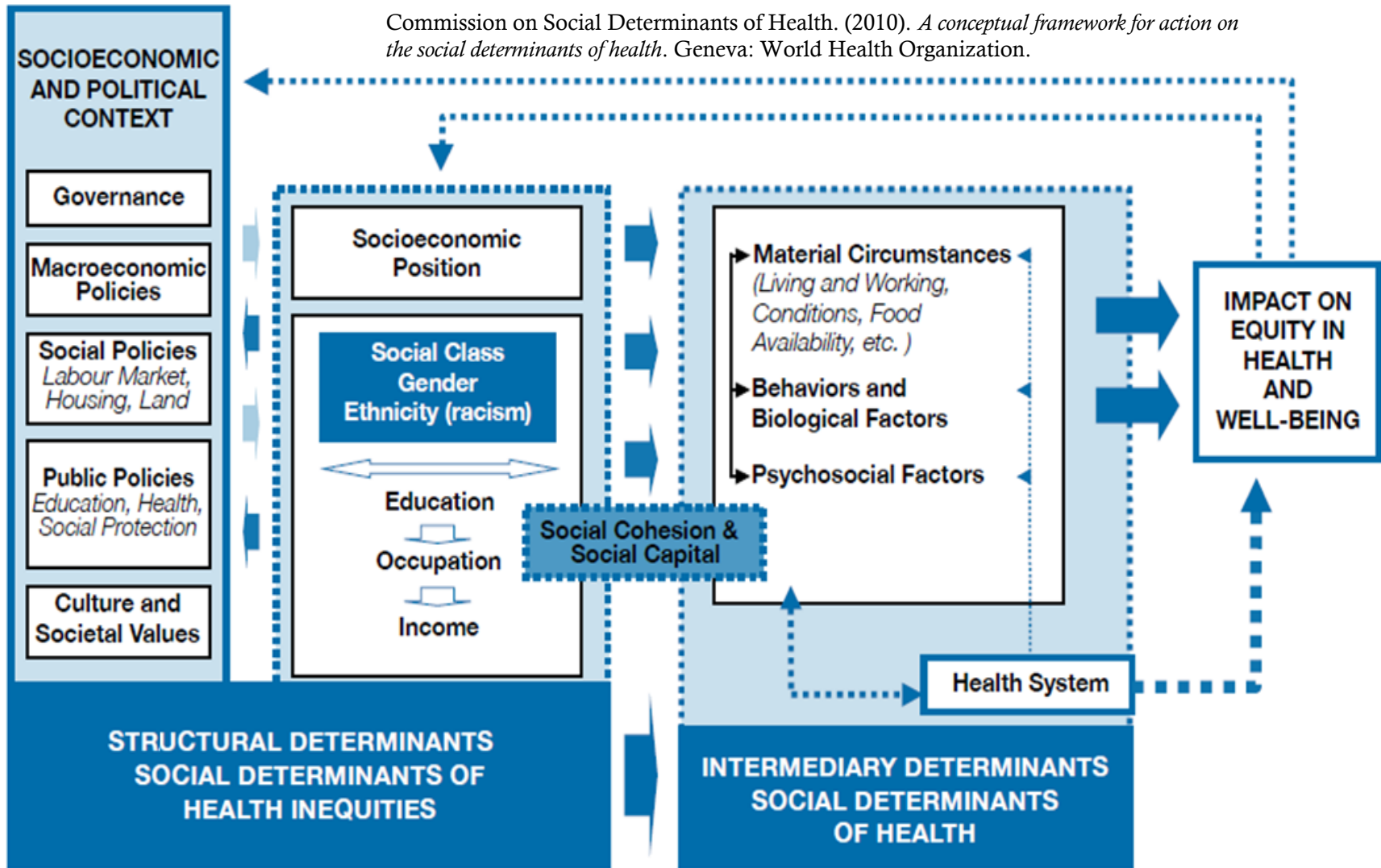


W.H.O. Conceptual Framework on SDoH

Commission on Social Determinants of Health. (2010). *A conceptual framework for action on the social determinants of health*. Geneva: World Health Organization.



Policy Examples: Addressing Inequities in Health Outcomes

Policies to assure equality of opportunity, mitigate effects of stratification

SOCIOECONOMIC and POLITICAL CONTEXT

Governance

Macroeconomic (state)

Policies that support livable incomes:

- Increase min wage to living wage and index to inflation

Policies that support (livable income) through tax mechanisms:

- EITC / Child Tax credit
- Income tax threshold

Labor Market Policies

Economic development policies that ensure full employment

Housing Policies

Policies that ensure access to affordable, safe housing

Land Use Policies

Community revitalization policies & programs with equity focus

Policies that reduce segregation & inc integration in neighborhoods, work environment, etc.

Education Policies

Policies that ensure early childhood education for all children

- E.g., Early Head Start; Universal Pre-K

Policies that ensure quality K-12 education for all

Health & Public Health Policies

Public Safety / Criminal Justice Policies

Social Protection Policies

Policies that incr. access, affordability & quality childcare

Policies that mandate paid family & medical leave

Policies that ensure unemployment insurance

Cultural & Societal Values

STRUCTURAL DETERMINANTS

- Policies to reduce **exposures** (of disadvantaged people) to health-damaging conditions
- Policies to reduce **vulnerabilities** (of disadvantaged people)

Socio-economic Position

Education

Occupation

Income / Wealth

Multiple forms of discrimination

Material Circumstances (Living & working conditions)

High school retention programs

Targeted programs to increase college enrollment

Policies & programs to increase workplace safety

Vocational training & job placement services

Transitional jobs programs that pay living wages

Policies & programs that improve neighborhood safety

Behavioral & Biological Factors

Psychosocial Factors

Build social support within families

Increase social connectedness among adults and among youth

Health & Social Services Systems

INTERMEDIARY DETERMINANTS

IMPACT ON EQUITY IN HEALTH OUTCOMES

Policies to reduce **unequal consequences of illness in social, economic & health terms**

Policies that increase access to healthcare and social services e.g., treatment alternatives to prison for non-violent drug offenders; expanded clinic hours; "HealthLeads approaches, etc.

Cross-cutting Determinants

- Policies and practices to improve civic participation to assure the conditions in which all people can be healthy
- Correct narrative about what creates health
- Build social cohesion, social capital, and community capacity / power / agency