



Health Impact Collaborative
of Cook County

Working together for healthy communities.

Health Impact Collaborative of Cook County

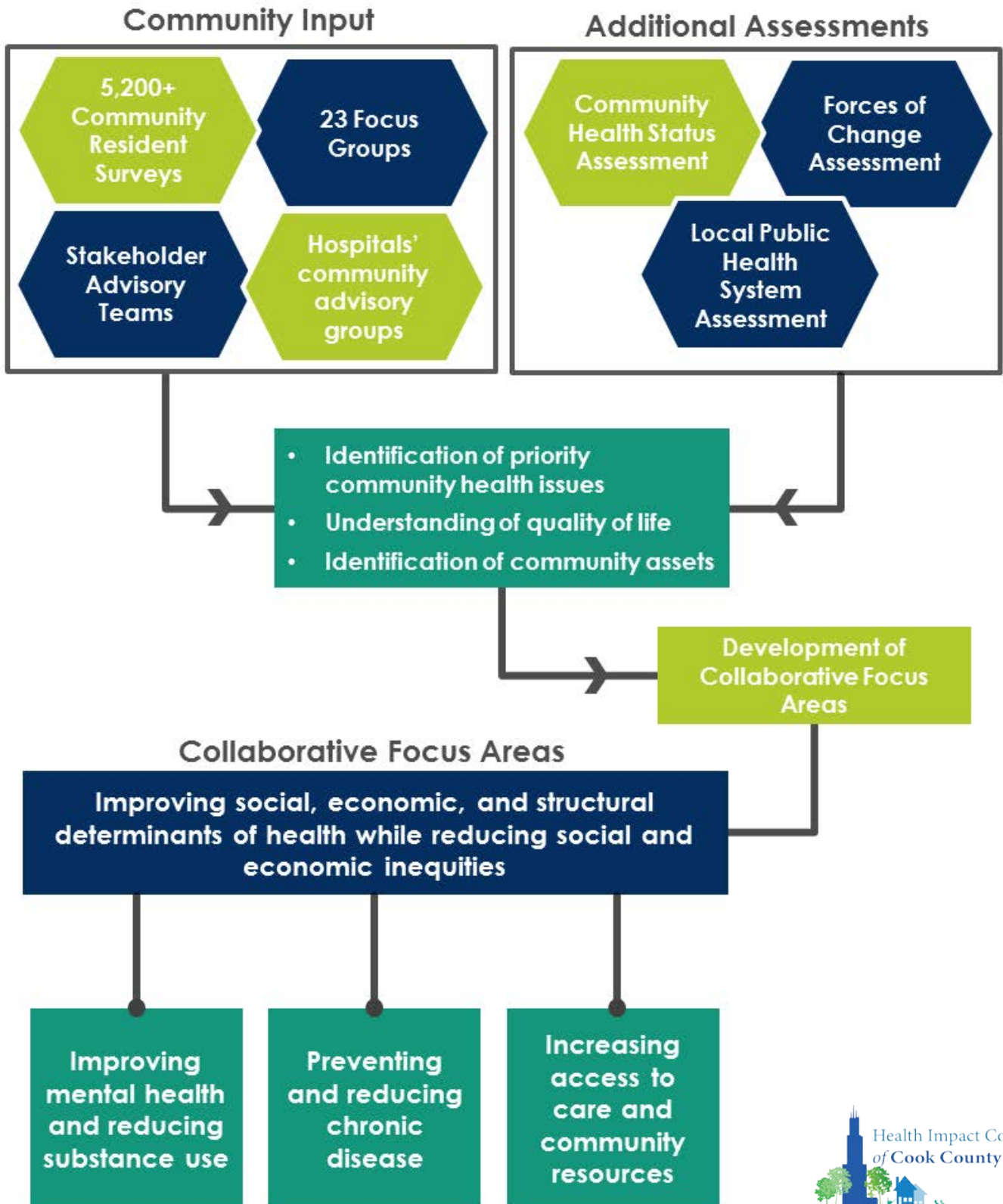
Overview of Community Focus
Group Findings

2015-2016

Access Full Reports At: <http://healthimpactcc.org/reports2016/>

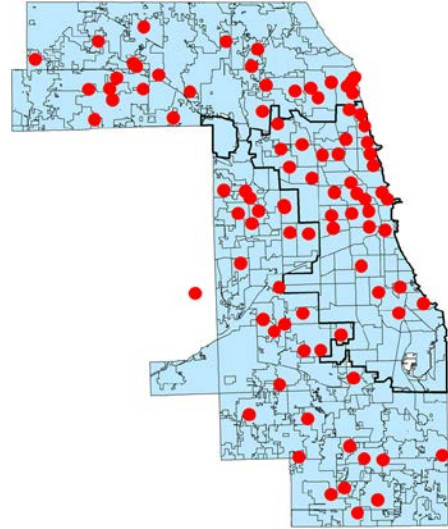
Purpose

The purpose of collecting community input data was to identify themes that interest and engage the community, demonstrate perceptions about quality of life, and identify community assets. The community input data was used in conjunction with Community Health Status Assessment data, a Forces of Change Assessment, and a Local Public Health System Assessment to inform the development of the collaborative focus areas.



Focus Groups

Twenty-three focus groups were conducted with residents from more than 100 different communities. There was targeted outreach to communities that are typically underrepresented in assessment processes.



Focus Group Host Organizations and Participants

Adult Down Syndrome Center Caregivers and adults living with Down Syndrome

Arab American Family Services Staff who are community residents

Asian Human Services Staff who are community residents

Chinese American Service League Staff who are community residents

Diabetes Empowerment Center Casa Central Staff and Community Members

ESL Class at St. Mary of Celle ESL Students

Faith leaders at Presence Saints Mary and Elizabeth Medical Center Faith leaders in the Humboldt Park Community Area

Hanul Family Alliance Korean community residents

Harper College Health Services Staff, students, and community residents

Healthy Rogers Park Network Business leaders in the Rogers Park Community Area

Housing Forward Formerly homeless individuals

Howard Brown Health Staff and LGBTQIA community members

Human Resources Development Institute Individuals participating in the day program

National Alliance for the Empowerment of the Formerly Incarcerated Formerly Incarcerated Re-Entry Circle Participants

National Alliance on Mental Illness - South Suburban family caregivers for adults with mental illness

Norwegian Intensive Outpatient Program Individuals in the IOP program

Norwood Senior Center Family Caregivers

Park Forest Village Hall (Hosted by Park Forest Department of Public Health) Community residents

Polish American Association Staff who are community residents

Quinn Center Community residents

Sexual Assault Nurse Examiners SANE at Advocate South Suburban Hospital SANE Nurses

Stickney Senior Center Older adults participating in a day program

Veterans of Foreign War Post 311 Veterans and former military

Key Themes

Focus group participants identified several factors that have a major impact on health in their communities.

Major Community Health Factors Identified by Focus Group Participants



Priority Populations

Focus group participants identified a number of priority populations that share a disproportionate burden of health problems.



Priority Populations that Focus Group Participants Identified

- Caregivers
- Children and adolescents
- Homeless individuals or families
- Immigrants
- Incarcerated or formerly incarcerated
- Individuals living with mental illness
- Individuals with intellectual disabilities
- Individuals with physical disabilities
- Lesbian, Gay, Bisexual, Queer, Intersex, and Asexual individuals
- Low-income communities
- Marginalized racial and ethnic groups
- Older adults
- Single parents
- Transgender individuals
- Veterans
- Women

Opportunities to Improve Health

Focus group participants mentioned several opportunities for hospitals to partner with communities to improve health.



Sustainable Funding for Community Based Organizations



Policy Change and Advocacy



Economic and Workforce Development in low-income communities of color



Partnerships with Community Based Organizations



Increasing Cultural and Linguistic Competency of Service Providers



Creating an Easily Accessible Database of Community Resources



Expansion of Public Transit & Transportation Services



Affordable Housing Solutions



Increasing the Number of Inter-generational Services Available in Communities



Health Impact Collaborative of Cook County

Working together for healthy communities.

To access full Community Health Needs Assessment reports including all of the community focus group findings please log on to:

<http://healthimpactcc.org/reports2016/>

Or contact:

Jess Lynch

Program Manager

Illinois Public Health Institute

Jessica.Lynch@iphionline.org

312-850-4744

Leah Barth

Program Assistant

Illinois Public Health Institute

Leah.Barth@iphionline.org

312-850-4744



Prepared by Illinois Public Health Institute